

Pro-Tools

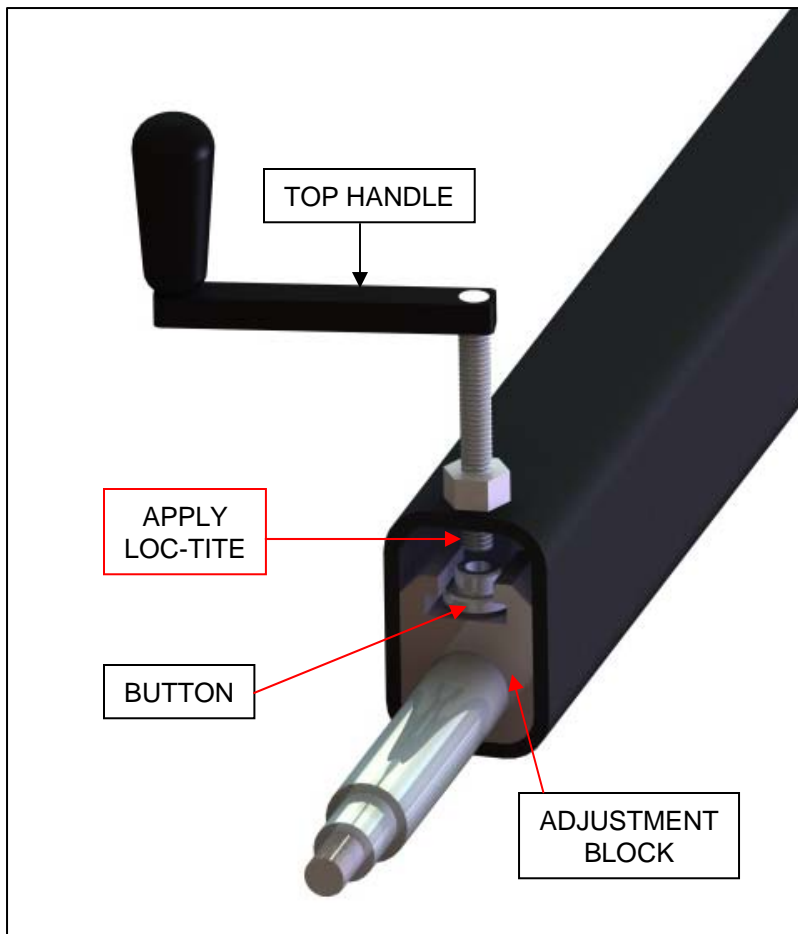
MADE IN THE U.S.A.

MODEL 3 BEAD ROLLER INSTRUCTION SET



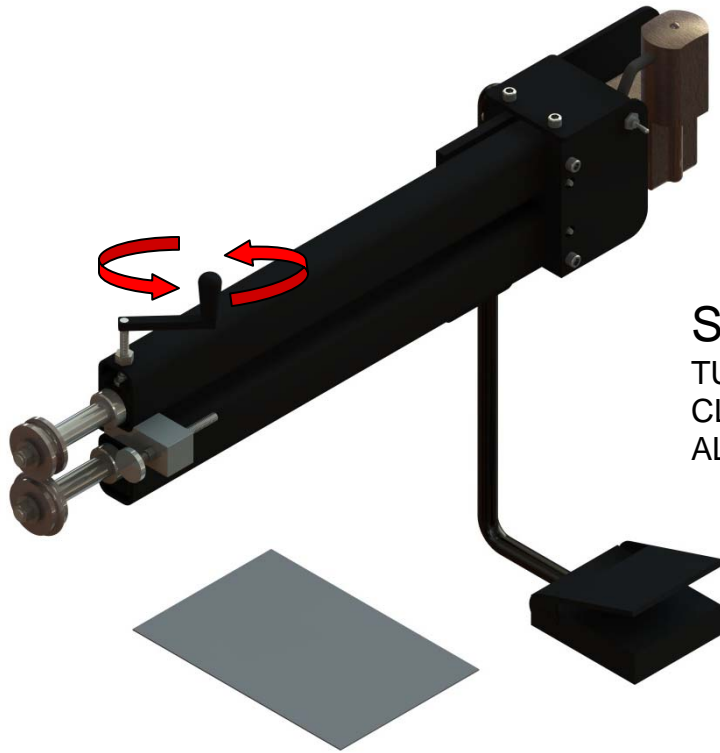
PRO-TOOLS
7616 INDUSTRIAL LANE TAMPA, FLORIDA 33637-6715
813-986-9000 PHONE 813-985-6588 FAX
www.pro-tools.com

HANDLE INSTALLATION

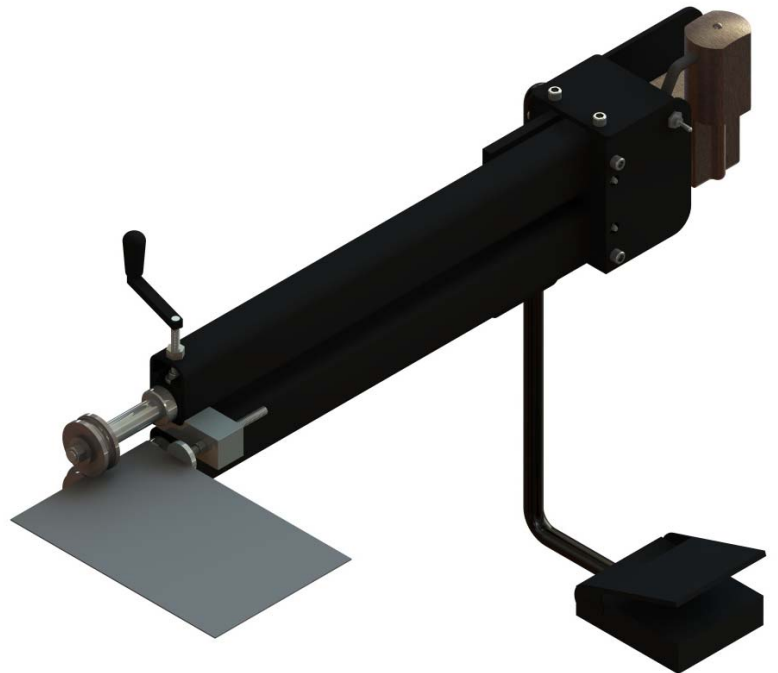


TO ASSEMBLY THE TENSION HANDLE YOU WILL NEED TO THREAD TOP PART OF HANDLE INTO MACHINE. THEN SLIDE BUTTON INTO ADJUSTMENT BLOCK. PLACE A LIBERAL AMOUNT OF RED LOC-TITE ON LOWER THREADS AND SCREW INTO BUTTON. LET LOC-TITE CURE AND LUBRICATE OUTSIDE OF BUTTON SO IT WILL ROTATE EASILY.

OPERATING INSTRUCTIONS FOR MODELS



STEP 1:
TURN TOP HANDLE COUNTER-
CLOCKWISE TO RAISE TOP ROLLER TO
ALLOW FOR MATERIAL TO ENTER IN.



STEP 2:
PLACE MATERIAL AT JUST PAST
EDGE OF ROLLERS AND TURN TOP
HANDLE CLOCKWISE TO SECURE
MATERIAL.

OPERATING INSTRUCTIONS FOR MODELS

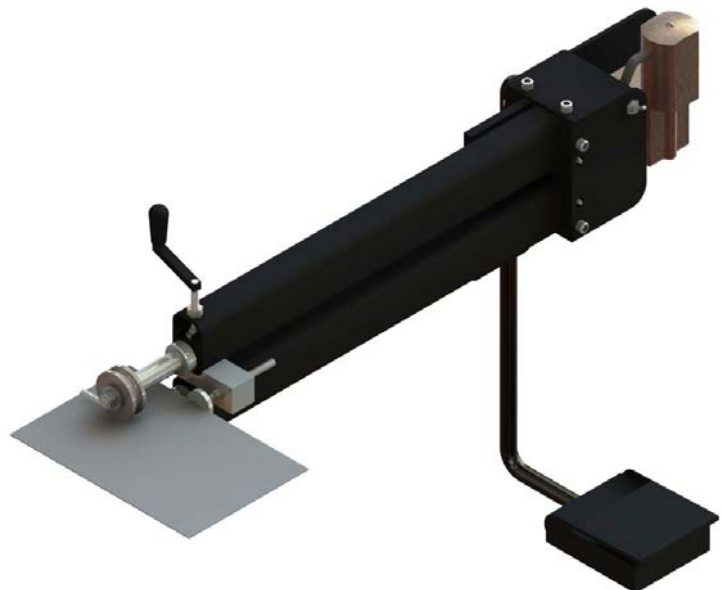
STEP 3:

SWITCH TOGGLE SWITCH IN UP POSITION FOR A STRAIGHT FEED.



STEP 4:

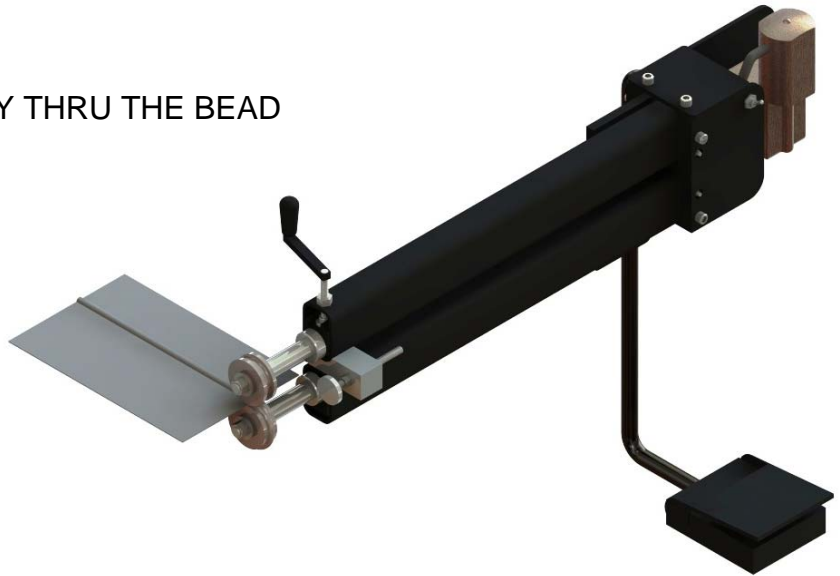
DEPRESS FOOT PEDAL TO START ROLL YOUR BEAD.



OPERATING INSTRUCTIONS FOR MODELS

STEP 5:

FEED THE MATERIAL ALL THE WAY THRU THE BEAD ROLLER.



STEP 5:

AFTER FIRST PASS PLACE SWITCH IN DOWN POSITION (REVERSE). NOW YOUR READY FOR THE SECOND PASS OF THE MATERIAL.



OPERATING INSTRUCTIONS FOR MODELS

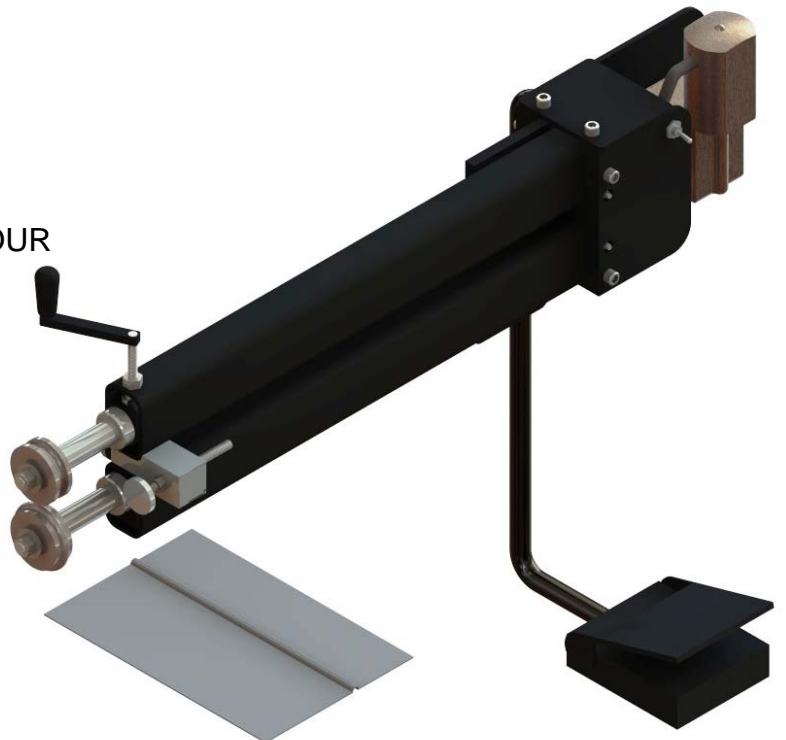
STEP 7:

FEED THE MATERIAL BACK THROUGH BEAD ROLLER.
THIS IS THE REVERSE OF STEP 4.



STEP 8:

TURN ADJUSTMENT HANDLE COUNTER-
CLOCKWISE TO RELEASE MATERIAL. YOUR
BEAD IS DONE.



Pro-Tools

MADE IN THE U.S.A.

WARRANTY POLICY

ALL PRODUCTS THAT PRO-TOOLS MANUFACTURES CARRY A ONE YEAR GUARANTEE AGAINST DEFECTS IN MATERIAL OR WORKMANSHIP. (PRODUCTS THAT WE SELL BUT DO NOT MAKE ARE COVERED UNDER THAT MANUFACTURING WARRANTY PLAN). ANY TOOLS OR PARTS THAT FAIL ARE 100% COVERED UNDER THE WARRANTY AND WILL BE REPAIRED FREE OF CHARGE (EXCLUDING FREIGHT CHARGES). MISUSE OR ABUSE IS NOT COVERED. SIMPLY CALL AND GET A WARRANTY AUTHORIZATION NUMBER AND IT WILL BE PROMPTLY AND CHEERFULLY TAKEN CARE OF.



SAFETY WARNINGS



- ALWAYS READ AND UNDERSTAND DIRECTIONS THAT ARE INCLUDED WITH ALL PRO-TOOLS EQUIPMENT BEFORE OPERATING. IF DIRECTIONS ARE NOT INCLUDED, CALL PRO-TOOLS IMMEDIATELY.
- USE OF FABRICATION EQUIPMENT MAY PRESENT A PINCH OR CRUSH HAZZARD.
- ALWAYS OPERATE PRO-TOOLS EQUIPMENT WEARING SAFETY EQUIPMENT.
- ALWAYS USE THE CORRECT EQUIPMENT FOR THE PROJECT.
- NEVER USE PIPE BENDING DIES ON A TUBE OR TUBE DIES ON A PIPE.
- KNOW THE MATERIALS YOU ARE USING BEFORE BEGINNING FABRICATION.
- ALWAYS INSPECT EQUIPMENT PRIOR TO USE TO MAKE SURE IT IS IN GOOD WORKING ORDER. IF YOU ARE IN DOUBT, DO NOT USE AND CONTACT PRO-TOOLS.
- NEVER SUBSTITUTE COMPONENTS FROM OTHER EQUIPMENT. MAKE SURE COMPONENTS MATCH.
- NEVER EXCEED THE MANUFACTURER'S SPECIFICATIONS SET BY PRO-TOOLS.
- **ALWAYS LUBRICATE METAL ON METAL PARTS!!!!**



BEAD ROLLER FAQ's

Q: WHAT MATERIAL CAN I USE IN THE BEAD ROLLER?

A: YOU CAN USE ALUMINUM SHEET METAL UP TO 16GA. AND UP TO 18GA MILD STEEL.

Q: CAN YOU CONVERT THE MODEL 2 BEAD ROLLER INTO AN ELECTRIC MODEL 3?

A: YES, CALL OUR SALES ASSOCIATES AND ORDER THE ELECTRIC CONVERSION KIT.

Q: ARE THE TOOLS REALLY MADE IN THE U.S.A. ?

A: YES, ALL MACHINED PARTS ARE MADE IN OUR FACILITY IN TAMPA, FLORIDA.

Q: CAN I USE THE BEAD ROLLER TUBES TO CONNECT HOSES?

A: YES WE HAVE A TUBE BEAD ROLL AVAILABLE FOR THAT USE.

Q: CAN I USE THE BEAD ROLLER FOR FENDER WELLS?

A: YES, WE DO OFFER A 3 STEP HEM ROLL SET DESIGNED JUST FOR THAT PURPOSE.