

Pro-Tools

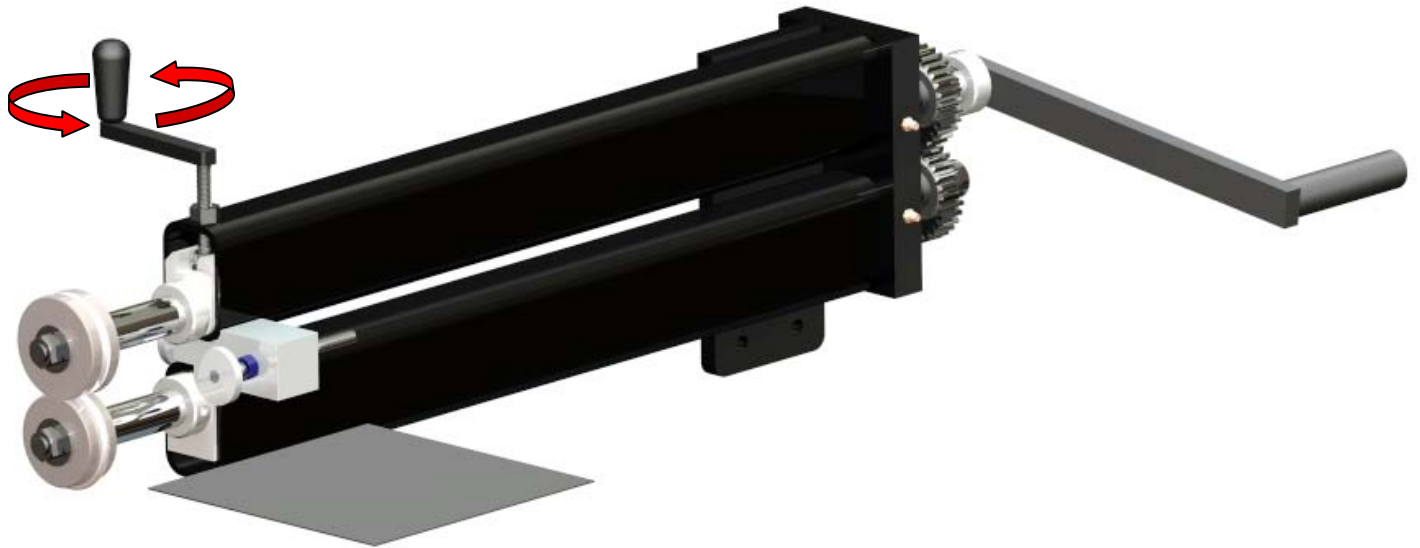
MADE IN THE U.S.A.

MODEL 2 BEAD ROLLER INSTRUCTION SET



PRO-TOOLS
7616 INDUSTRIAL LANE TAMPA, FLORIDA 33637-6715
813-986-9000 PHONE 813-985-6588 FAX
www.pro-tools.com

OPERATING INSTRUCTIONS FOR MODELS



STEP 1:

TURN TOP HANDLE COUNTER-CLOCKWISE TO RAISE TOP ROLLER TO ALLOW FOR MATERIAL TO ENTER IN.



STEP 2:

PLACE MATERIAL AT JUST PAST EDGE OF ROLLERS AND TURN TOP HANDLE CLOCKWISE TO SECURE MATERIAL.

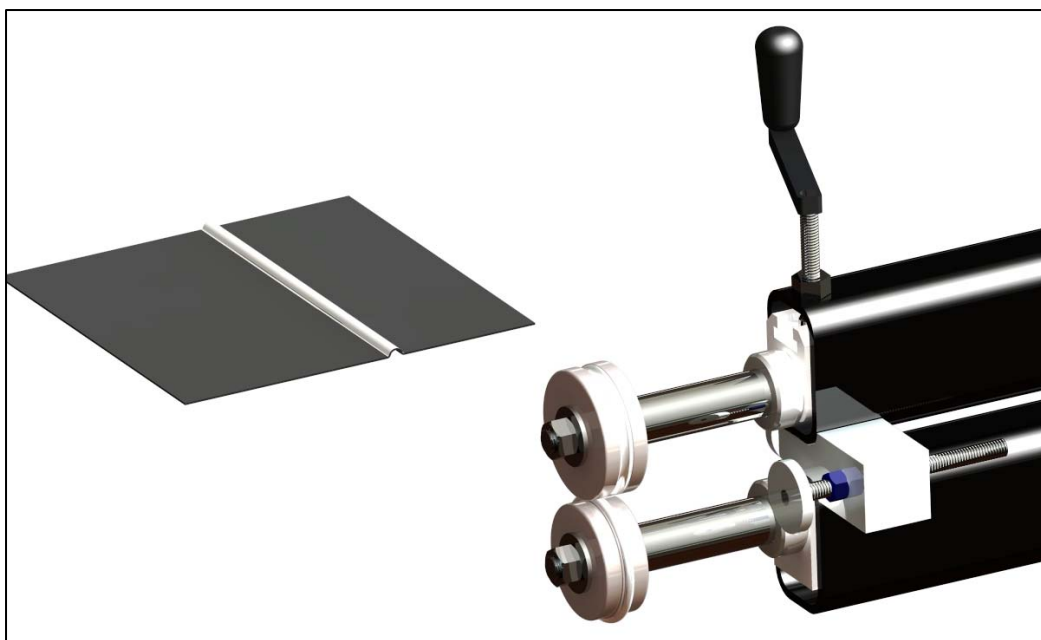
OPERATING INSTRUCTIONS FOR MODELS

STEP 3:

TURN HANDLE CRANK AND MATERIAL WILL MOVE THROUGH THE ROLLERS. MAKE MULTIPLE PASSES.



FINISHED RESULT



Pro-Tools

MADE IN THE U.S.A.

WARRANTY POLICY

ALL PRODUCTS THAT PRO-TOOLS MANUFACTURES CARRY A ONE YEAR GUARANTEE AGAINST DEFECTS IN MATERIAL OR WORKMANSHIP. (PRODUCTS THAT WE SELL BUT DO NOT MAKE ARE COVERED UNDER THAT MANUFACTURING WARRANTY PLAN). ANY TOOLS OR PARTS THAT FAIL ARE 100% COVERED UNDER THE WARRANTY AND WILL BE REPAIRED FREE OF CHARGE (EXCLUDING FREIGHT CHARGES). MISUSE OR ABUSE IS NOT COVERED. SIMPLY CALL AND GET A WARRANTY AUTHORIZATION NUMBER AND IT WILL BE PROMPTLY AND CHEERFULLY TAKEN CARE OF.



SAFETY WARNINGS



- ALWAYS READ AND UNDERSTAND DIRECTIONS THAT ARE INCLUDED WITH ALL PRO-TOOLS EQUIPMENT BEFORE OPERATING. IF DIRECTIONS ARE NOT INCLUDED, CALL PRO-TOOLS IMMEDIATELY.
- USE OF FABRICATION EQUIPMENT MAY PRESENT A PINCH OR CRUSH HAZZARD.
- ALWAYS OPERATE PRO-TOOLS EQUIPMENT WEARING SAFETY EQUIPMENT.
- ALWAYS USE THE CORRECT EQUIPMENT FOR THE PROJECT.
- NEVER USE PIPE BENDING DIES ON A TUBE OR TUBE DIES ON A PIPE.
- KNOW THE MATERIALS YOU ARE USING BEFORE BEGINNING FABRICATION.
- ALWAYS INSPECT EQUIPMENT PRIOR TO USE TO MAKE SURE IT IS IN GOOD WORKING ORDER. IF YOU ARE IN DOUBT, DO NOT USE AND CONTACT PRO-TOOLS.
- NEVER SUBSTITUTE COMPONENTS FROM OTHER EQUIPMENT. MAKE SURE COMPONENTS MATCH.
- NEVER EXCEED THE MANUFACTURER'S SPECIFICATIONS SET BY PRO-TOOLS.
- ALWAYS LUBRICATE METAL ON METAL PARTS!!!!**



BEAD ROLLER FAQ's

Q: WHAT IS THE DIFFERENCE BETWEEN THE HSN-500 AND HSN501i?

A: THE HSN-500 IS OUR BASIC NOTCHER PACKAGE. THE HSN-501i OFFERS CUSTOMERS THE ABILITY TO NOTCH OFF CENTER CUTS.

Q: WHAT SIZE TUBE OR PIPE CAN I NOTCH?

A: 3/4" – 2" TUBE CAN BE NOTCHED, AS WELL AS 3/4" – 1 1/2" PIPE."

Q: HOW MANY DEGREES CAN IT NOTCH?

A: BOTH MODELS CAN NOTCH UP TO 60 DEGREES.

Q: WHAT TYPE OF HOLE SAWS SHOULD I USE?

A: YOU SHOULD ALWAYS USE AMERICAN MADE BI-METAL HOLE SAWS.

Q: HOW MANY CUTS CAN I GET FROM MY HOLE SAWS?

A: THIS ALL DEPENDS ON TYPE OF MATERIAL YOU ARE NOTCHING. PIPE WILL DEGRADE THE HOLE SAW QUICKER THAN ALUMINUM TUBE. AMOUNT OF WALL THICKNESS WILL ALSO AFFECT THE DURABILITY OF THE HOLE SAW.